



# CONTROL SYSTEMS CONSULTANTS

Office Hours: M - F  
8:00 am – 5:00 pm

P.O. Box 1688  
Terrell, TX 75160

O: 972.524.2801  
F: 972.524.3801

www.controlsystemsconsultants.com  
service@csctexas.com

**Integrated Systems Solutions**

Today's facilities are equipped with diverse systems designed to control HVAC, energy management, lighting, and security. Integration between all of these systems is critical to improving operations, lowering costs, and achieving the security and comfort demanded in today's business environments. One of the largest challenges is to get these systems that communicate using different protocols to connect to each other. This is achieved by utilizing the Niagara Ax Framework which is the basis of all Tridium based control systems. These systems include Johnson Controls Fx, Honeywell WEBS, Distech Controls, and Tridium Vykon. We are factory trained and certified in all of the above control systems. Below are some of our notable projects in the DFW area.

## Who We Are

Control Systems Consultants has represented Johnson Controls for over twenty-five years in not only North Texas but throughout the Southeastern United States. We are the largest independent Johnson Controls contractor in the state of Texas. We were the first contractor in the state of Texas to be trained in and offer Tridium / Niagara AX frame work.

We are staffed with building automation controls engineers, project managers, technicians, and an installation group comprised of twelve licensed electricians. In addition, many of our staff are certified in controls and network administration and also carry state certifications in HVAC, Refrigeration, and Plumbing.

## What We Do

Control Systems Consultants specialize in the design, installation, programming, maintenance & service of building automation systems. These include HVAC automation, lighting control, security / access systems, and energy analytics

We have the knowledge and experience to accomplish any level of project design. Our work ranges from multi-story office buildings, to college universities, small churches, medical facilities, and military installations.

### PALOMAR HOTEL



#### DALLAS

400,000 Sq. Ft  
**Owner:**  
Klimpton  
**Architect:**  
Three Architecture  
**Notes:**  
Premier urban resort

### ONE MUSEUM PLACE



#### FT. WORTH

193,000 Sq. Ft  
**GC:**  
Thomas S Bryne  
**MEP:**  
Blum  
**Notes:**  
High end mixed-use

### CARSWELL NAS JRB



#### FT. WORTH

500,000 Sq. Ft +  
**Owner:**  
DoD\NAVFAC  
**Notes:**  
Multiple war time projects on the busiest reserve base in the world.

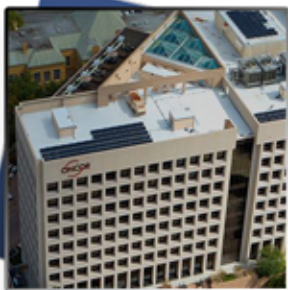
### DALLAS COUNTRY CLUB



#### DALLAS

**Renovation:**  
\$27 Million  
**Architect:**  
Mai Design Group  
**GC:**  
McCarthy

### ONCOR HEADQUARTERS



#### DALLAS

270,000 Sq. Ft.  
**Architect:**  
Coorgan and Associates  
**MEP:**  
Blum  
**Notes:**  
LEED: Gold

## **Integrated System Solutions**

*Maintain, Upgrade, Repair, or Change Out*



Distech Controls



Connecting minds and machines